

MONTHLY MEMBERSHIP PROGRESS REPORT

LOCATION INDIA

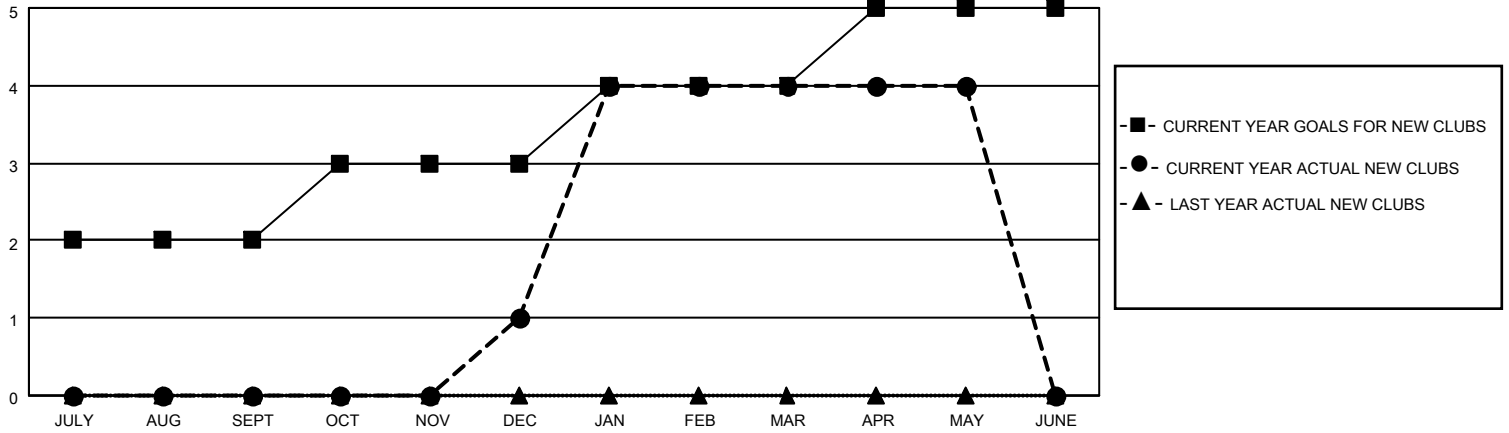
District 316 H

Results as of: 5/31/2021

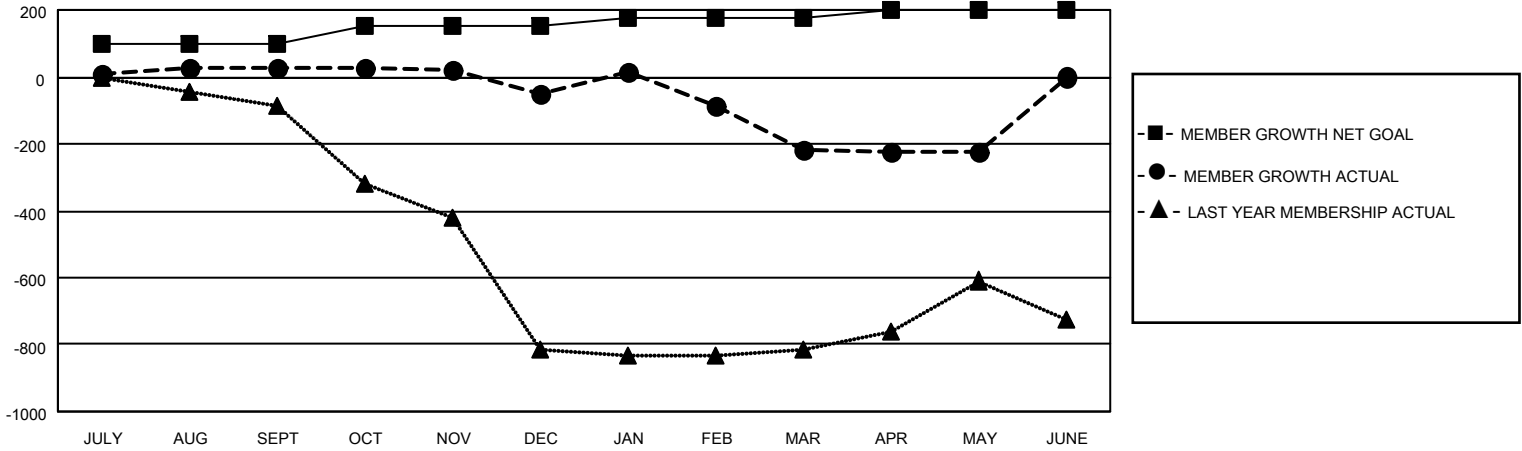
Clubs			
RESULTS FOR 2020-2021			
QUARTER	NEW CLUB GOAL	NEW CLUBS	DROPPED CLUBS
JULY/AUG/SEPT	2	0	0
OCT/NOV/DEC	1	1	0
JAN/FEB/MAR	1	3	5
APR/MAY/JUNE	1	0	0

Members			
RESULTS FOR 2020-2021			
QUARTER	MEMBER GROWTH NET GOAL	MEMBER GROWTH ACTUAL	DROPPED MEMBERS ACTUAL (including transfers)
JULY/AUG/SEPT	100	57	28
OCT/NOV/DEC	50	112	179
JAN/FEB/MAR	25	77	238
APR/MAY/JUNE	25	12	14

GOALS AND ACTUAL NEW CLUBS CUMULATIVE



GOALS AND ACTUAL MEMBERS CUMULATIVE



DROPPED CLUBS: 5	32 CLUBS OF 50 ADDED 1 OR MORE NEW MEMBERS	<u>GENDER DISTRIBUTION</u> MALE 1,298 (83.31%) FEMALE 260 (16.69%)
<u>DROPPED MEMBERS</u> DECEASED 19 CLUB CANCELLED 90 OTHER 350 <hr/> TOTAL 459	CLICK HERE FOR CUMULATIVE MEMBERSHIP DATA	TOTAL FAMILY UNIT MEMBERS 126 FAMILY MEMBERS PAYING HALF DUES 70